

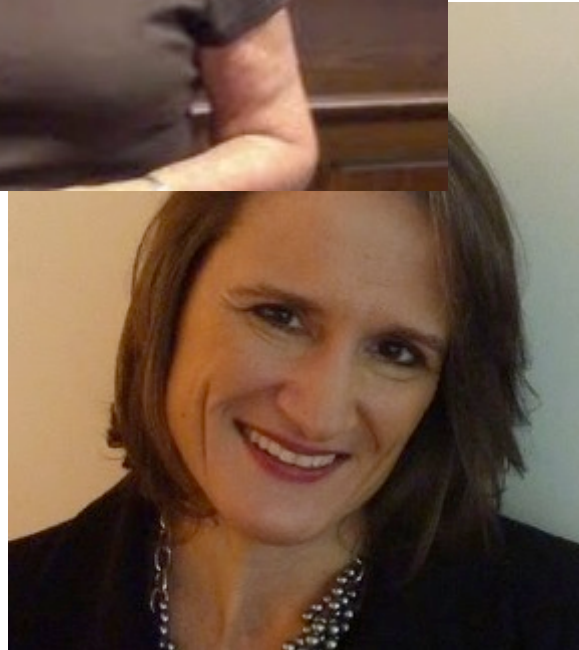


**Inspiring . Equipping.
Connecting.**



Parish Nursing Children's Sabbath Gray Panthers

What do they have in common?



In all three cases a PHEWA member saw a need and responded.



Passionate about the health of Eastern Kentucky's rural poor, Ruth Berry is one of the founding mothers of our denomination's parish nursing program.

Parish Nursing: Ministry to Mind, Body, and Spirit



Today, the parish nurses of PHEWA's Presbyterian Health Network advise and support congregations and parish nurses throughout the denomination.



In 1992 Rev. Shannon Daley-Harris, Presbyterian minister, Founder of PHEWA's Presbyterian Child Advocacy Network and religious advisor to the Children's Defense Fund created the National Observance of Children's Sabbath.

Today, Children's Sabbath is observed across denominations and faiths on the second Sunday in October

Children's Sabbath:



A way for faith communities to celebrate children as gifts from God and to renew their commitment to care, protect and advocate for all children.

Gray Panthers



At the age of 65, Maggie Kuhn found herself forcibly retired by the Presbyterian Church even though she loved her job and wanted to keep working.

So, Maggie founded the
“Gray Panthers,”

The Gray Panthers
continues to
advocate for the
rights of older adults
in the United States.





Inspire. Equip. Connect.

PHEWA **inspires** people of faith like Ruth, Shannon, and Maggie to respond to situations that diminish human life; **equips** them tools for effective action; and **connects** them to others to increase their effectiveness.



Whether it's the care and nurture of our congregations or ensuring access and voice for those whose gifts are often overlooked, PHEWA is there.

PHEWA was established by General Assembly action in 1956 and is an active ministry of the Presbyterian Mission Agency's **Compassion, Peace and Justice Ministry Area**. It interprets and implements General Assembly actions around the full range of health issues.



| | |
|--------|---|
| PACT | Presbyterian Association for Community Transformation |
| PADVNI | Presbyterians Against Domestic Violence Network |
| PAN | Presbyterian AIDS Network |
| PARO | Presbyterians Affirming Reproductive Options |
| PASPM | Presbyterian Association of Specialized Pastoral Ministries |
| PCAN | Presbyterian Child Advocacy Network |
| PDC | Presbyterians for Disability Concerns |
| PHN | Presbyterian Health Network |
| PSMIN | Presbyterian Serious Mental Illness Network |
| PCJN | Presbyterian Criminal Justice Network |



PHEWA believes in “doing with” rather than “doing for.” PHEWA’s core value, “nothing about us without us,” means that everyone must be at the table for work to proceed: consumers of services, professionals, family and friends.

Like a car that runs on two sources of power, PHEWA is a hybrid organization. It combines the strength and capacity of the national church with the autonomy and flexibility of a 501(c)3 organization.





But PHEWA's real strength lies in its
grassroots networks

And in its volunteers!

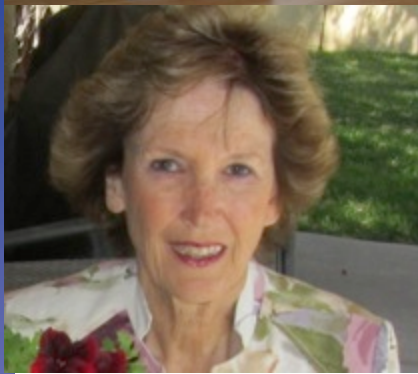
12 months =

8,000+ hours =

\$240,000 =

4 fulltime staff





m.





Each PHEWA network is guided by its own volunteer leadership team drawn from local congregations. Let's look at two of them.



Presbyterians Against Domestic Violence Network



PADV N works to end domestic violence. It deploys trained members to lead workshops at every level of church life; PADVN also creates annual congregational resource packets to coincide with domestic violence awareness month.

Internationally, PADVN . . .



- Has developed partnerships in Central America and Russia.
- Crosses borders to share best practices.
- Conducts onsite visits and training

PADVN Partnerships

PADVN members have entered into partnership with the Evangelical Center for Pastoral Studies in Central America (CEDEPCA) and the Russian Orthodox Church to develop culturally appropriate responses to the issue of domestic violence.

PADVN members regularly travel to both places to share best practices and organizing strategies



Then there's Presbyterians for Disability Concerns.

PDC's mission is simple . . .



Presbyterians for Disability Concerns



“To involve people with disabilities in the full life of the Church.”

phewa PDC

PRESBYTERIAN HEALTH, EDUCATION
AND WELFARE ASSOCIATION





Before every General Assembly, Presbyterians for Disability Concerns meets with the Committee on Local Arrangements to make sure that G.A. is a rich, inclusive experience for everyone.

PDC volunteers also show congregations how to make their facilities more accessible and create the resources that move congregations and individuals towards full inclusion.



When it comes to addressing the full inclusion of persons with disabilities in the life of the church,
the face of
Presbyterians for Disability Concerns
is the face of the Presbyterian
Church(USA).

In other words . . .

Through its networks, PHEWA does
the work of the Church
as the Church



And then there are those resource packets

January: Criminal Justice Sunday (PCJN)

March: Disability Inclusion (PDC)

October: Domestic Violence Awareness (PADVN)

November: Caregiver Sunday (PHN)

December: HIV and AIDS Awareness Sunday (PAN)

June: Health Awareness Sunday (PHN)

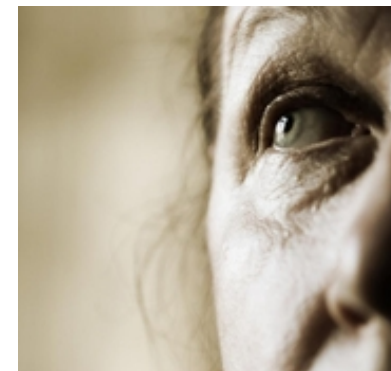




Waiting

In every congregation there
are people sitting in our
pews, waiting for a
message of hope,

Waiting to hear their church express
concern about the struggles that
confront them daily,



Waiting to hear that someone is aware of the addictions, or serious mental illness, or HIV and AIDS, or domestic violence, that dominates their lives.

It is the prayer of the network members who create these resources that they contribute to:

- An end the waiting;
- A breaking of the silence;
- The start of a conversation;
- The process of healing.



To sum up:

Those congregational resource packets?

That' s PHEWA!

The work that tells the world that the PC(USA is committed to justice and inclusion?

That' s PHEWA as well!

That phone number you call when you need information, a referral or a sympathetic ear . . .

PHEWA again!



That's PHEWA!

Because that's what PHEWA does



Inspires for responsive action.
Equips for effective action.
Connects for continuing action.

So PHEWA is a well known PC(USA) resource, right?

Not so much!

87%

13%

A Presbyterian Panel survey of church leaders and membership found that while 87% of respondents **agreed** that the work PHEWA does is important work for the church to do ... only 13% were familiar to very familiar with the organization itself.

But now **you** know

And **you** can spread the word!

Final Thoughts

“We are the risk-takers; we are the innovators; we are the developers of new models. We are trying the future on for size. That is our role.”

*Maggie Kuhn
Gray Panthers*



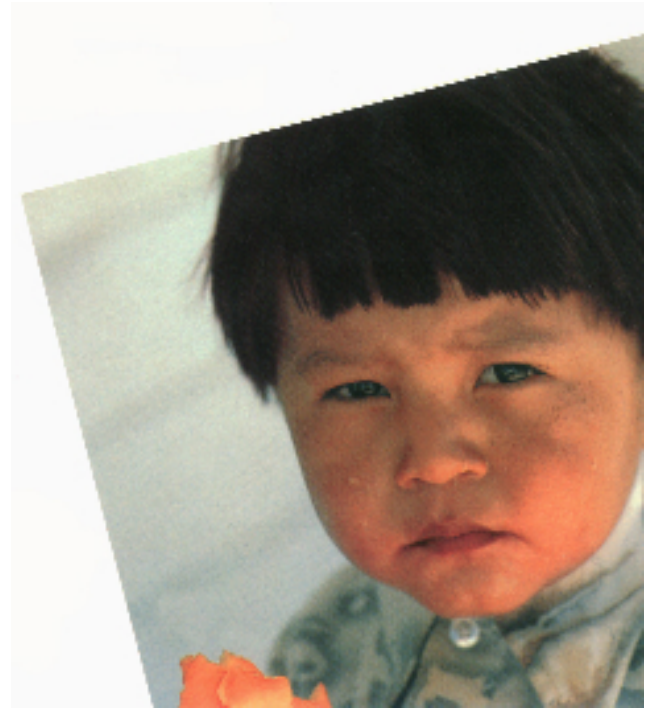
Risk takers.

Innovators.

Developers of new models.

That is PHEWA
past; present; and future
calling our beloved Church
to discover new ways to:

“Do justice
Love mercy
Walk humbly
With your God.”



Join the  Community

PRESBYTERIAN HEALTH, EDUCATION
AND WELFARE ASSOCIATION

Rev. Trina Zelle
National Organizer/
Executive Director
602-796-7477
trinazelle6@gmail.com

Check us out at the
PC(USA) website:
www.pcusa.org/phewa

Susan Stack
Program Associate
800-728-7228 ext. 5800
Susan.Stack@pcusa.org

Or at our resource website:
www.phewacommunity.org